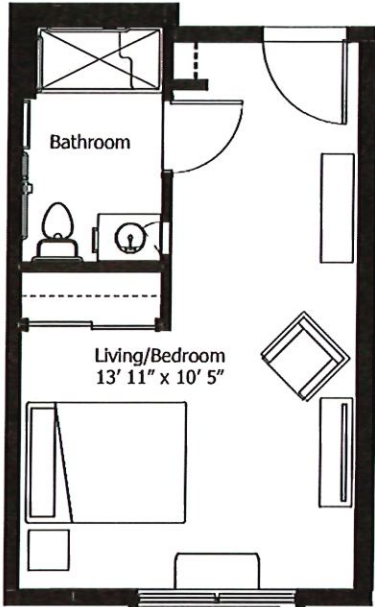
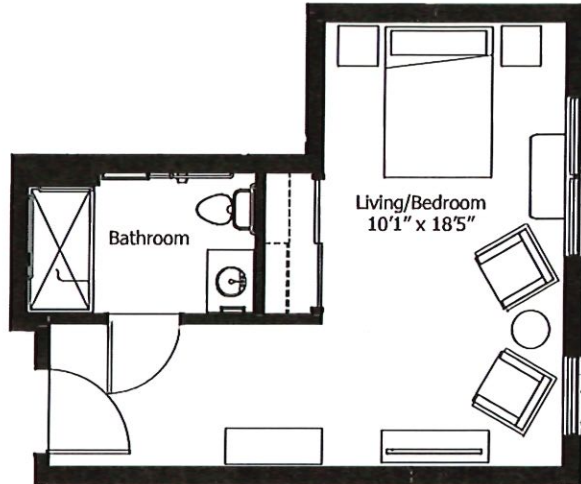


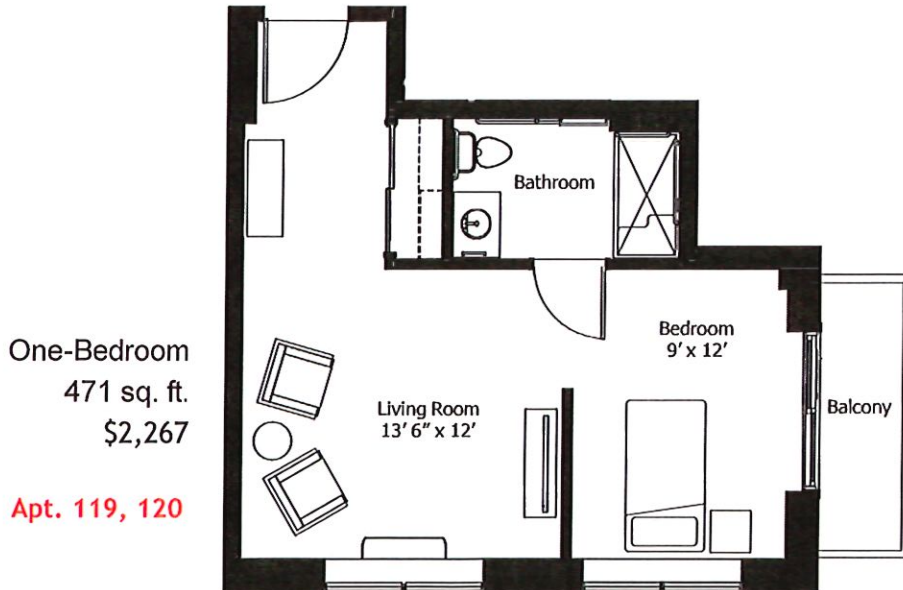
# Dove · Efficiency Apartments



364 sq. ft.  
ADA accessible  
\$2,026  
**Apt. 118**

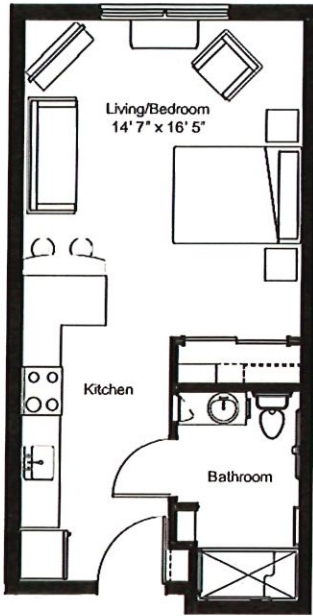


373 sq. ft.  
\$2,026  
**Apt. 121, 122**



One-Bedroom  
471 sq. ft.  
\$2,267  
**Apt. 119, 120**

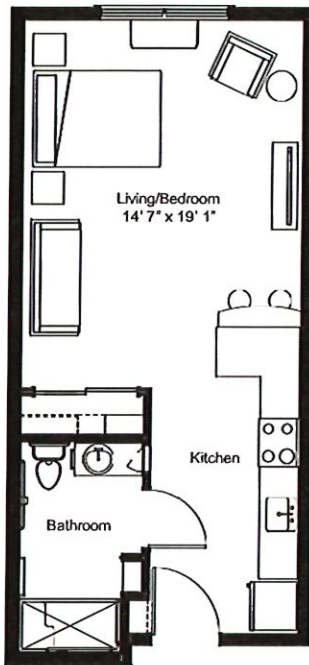
# Wren · Studio Apartments



470 sq. ft., A

\$2,026

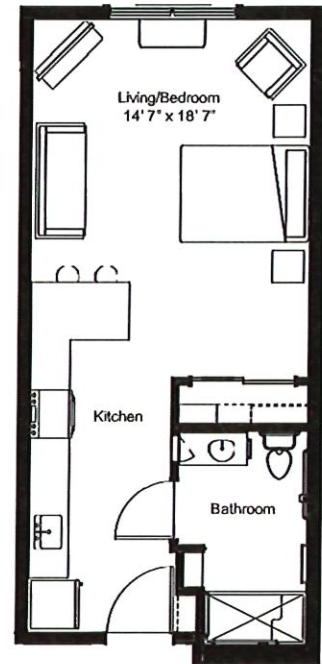
**Apt. 113, 115**



509 sq. ft., A2

\$2,026

**Apt. 217, 315, 317**

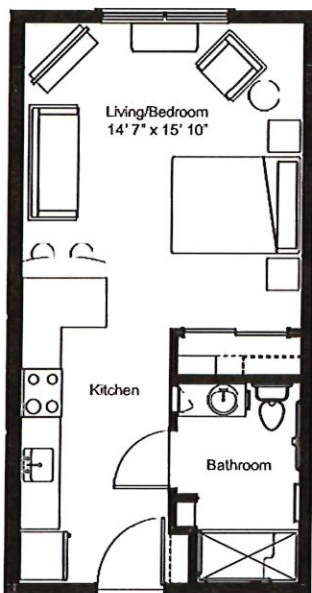


509 sq. ft., A2

*ADA accessible*

\$2,026

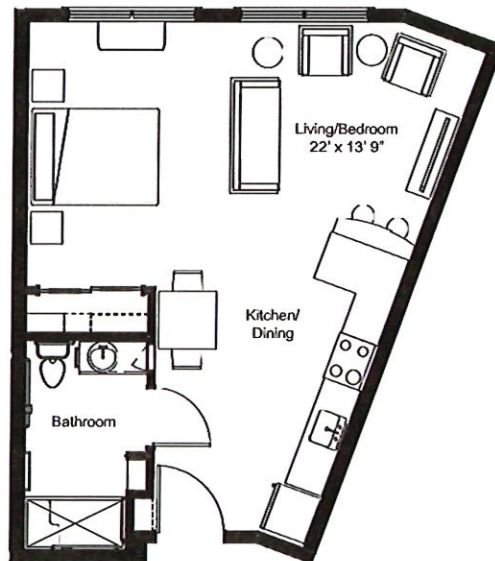
**Apt. 215**



462 sq. ft., B

\$2,026

**Apt. 227, 327**

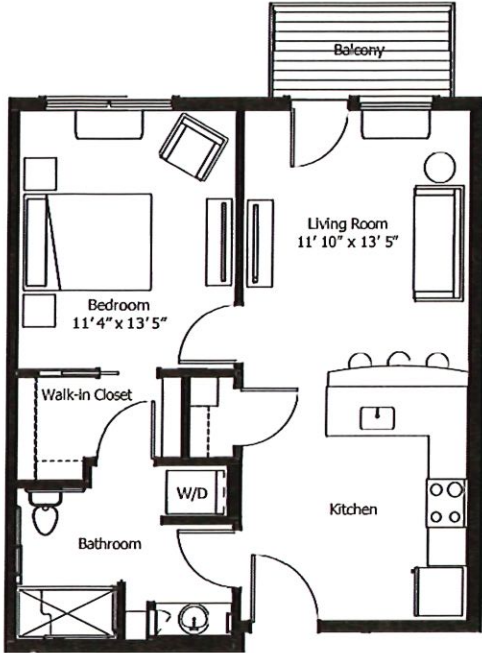


567 sq. ft., C

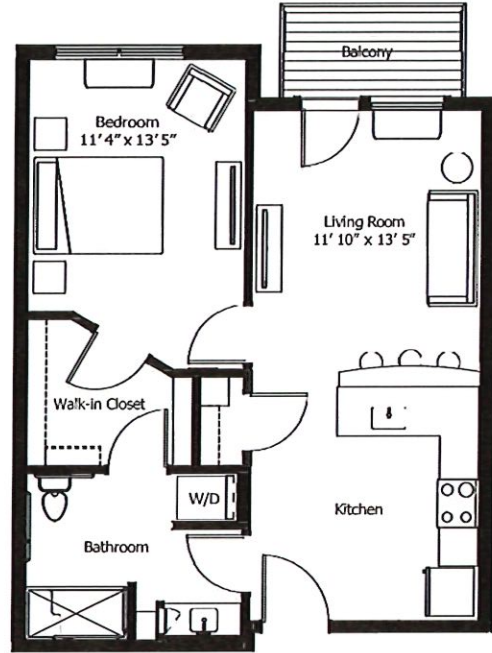
\$2,267

**Apt. 207, 307**

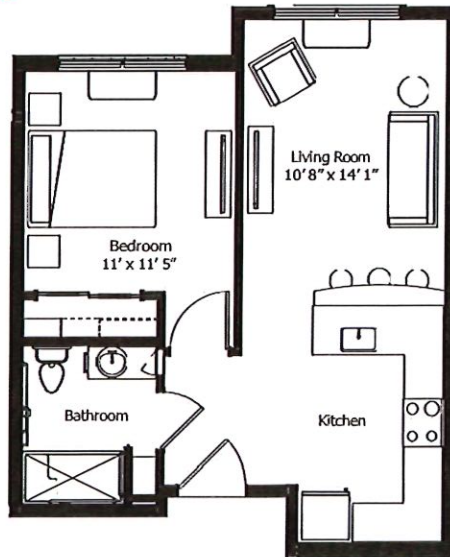
# Bobwhite · One-Bedroom Apartments



682 sq. ft., F  
\$2,703  
**Apt. 114**

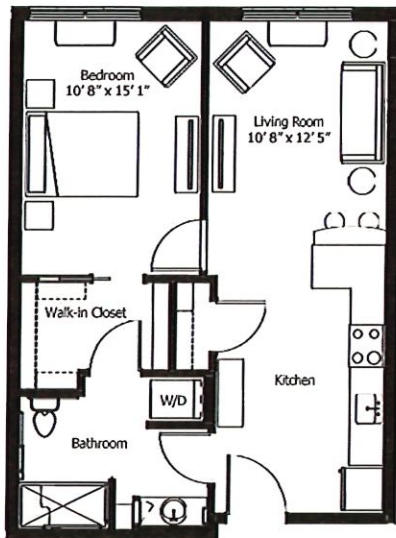


717 sq. ft., F2  
\$2,740  
**Apt. 216, 218, 316, 318**



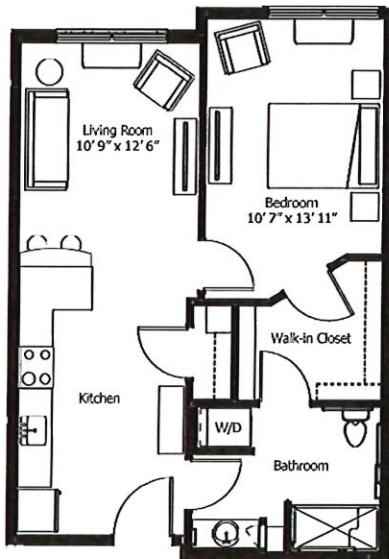
579 sq. ft., G  
\$2,305  
**Apt. 228, 328**

# Robin · One-Bedroom Apartments



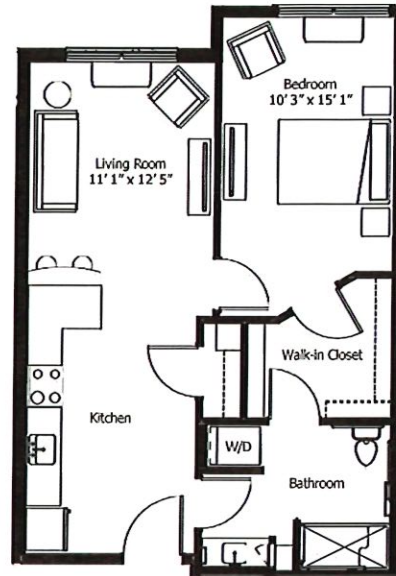
694 sq. ft., D  
\$2,641

**Apt. 102, 103, 104**



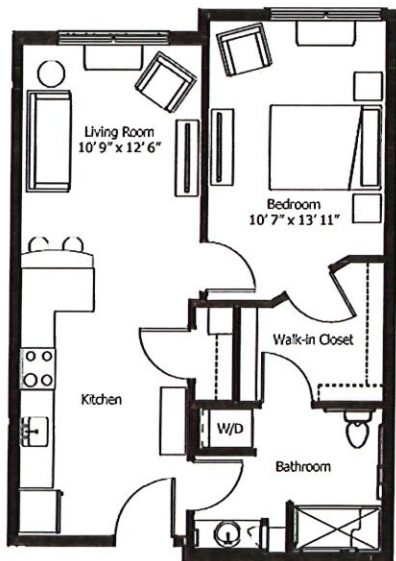
708 sq. ft., D  
*ADA accessible*  
\$2,641

**Apt. 303**



722 sq. ft., D2  
\$2,641

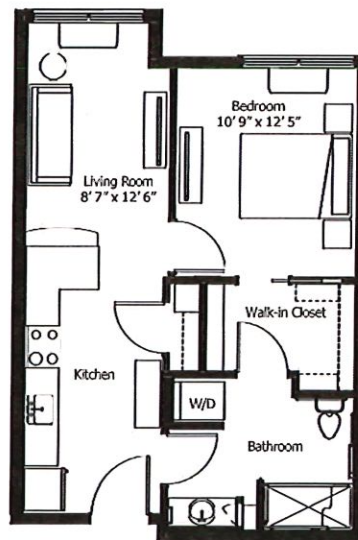
**Apt. 202, 204, 302, 304**



708 sq. ft., D3

\$2,641

**Apt. 203**

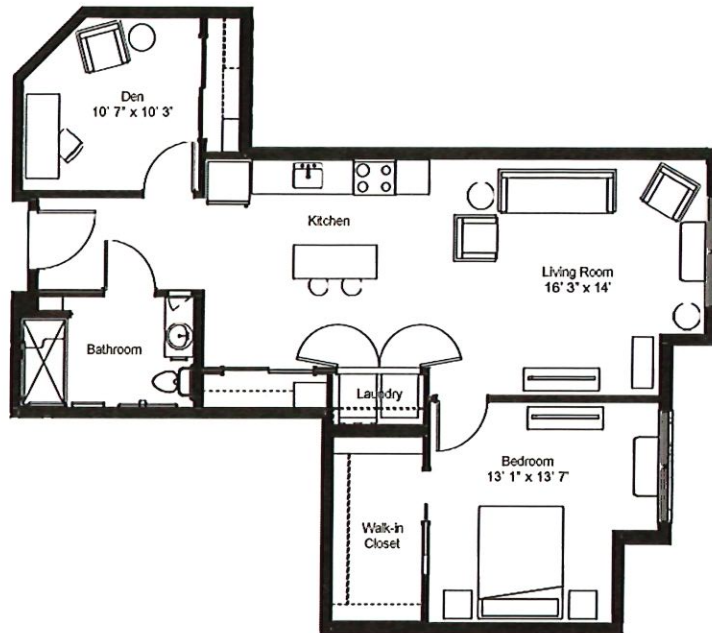


595 sq. ft., E

\$2,329

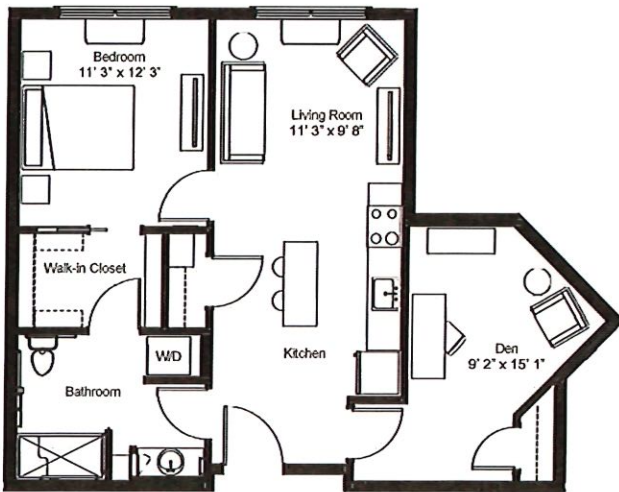
**Apt. 111, 219, 319**

# Cardinal · One-Bedroom + Den Apartments



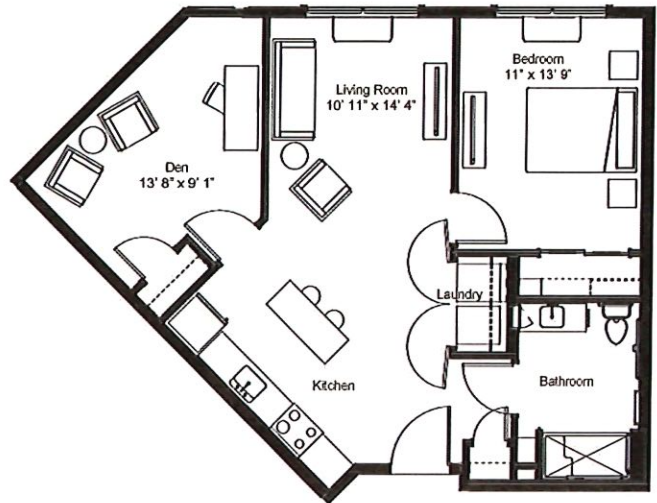
983 sq. ft., N  
\$3,272

**Apt. 226, 326**



815 sq. ft., P  
\$3,049

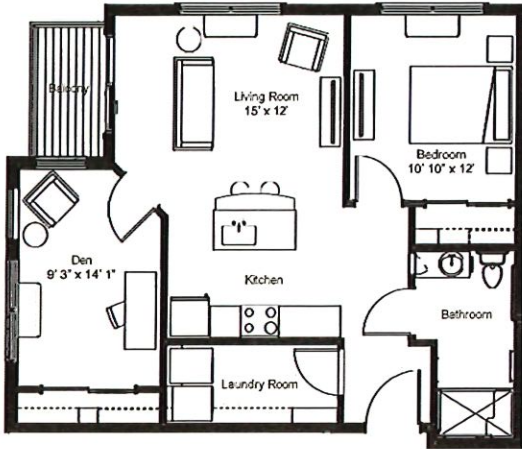
**Apt. 209, 309**



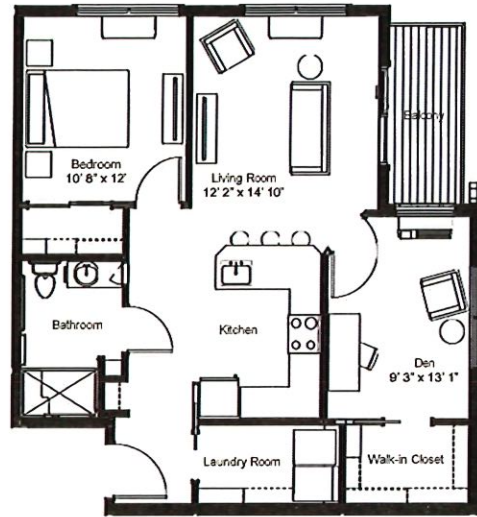
848 sq. ft., Q  
\$3,127

**Apt. 108, 208, 308**

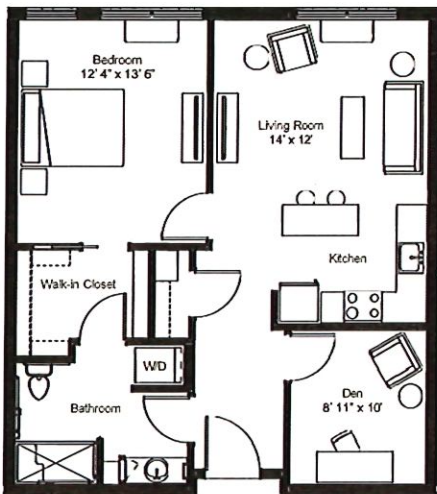
## Flicker · One-Bedroom + Den Apartments



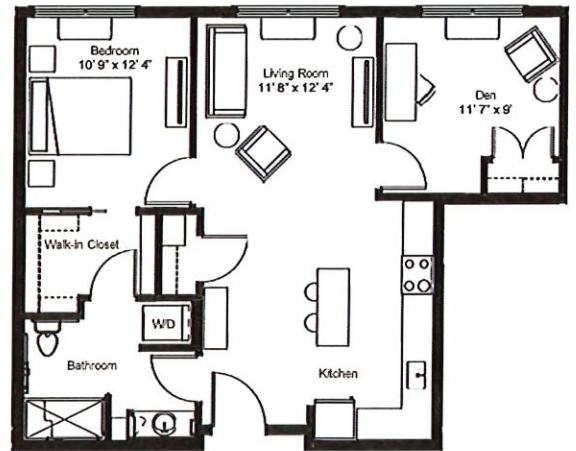
865 sq. ft., J  
\$3,183 Apt. 101, 201



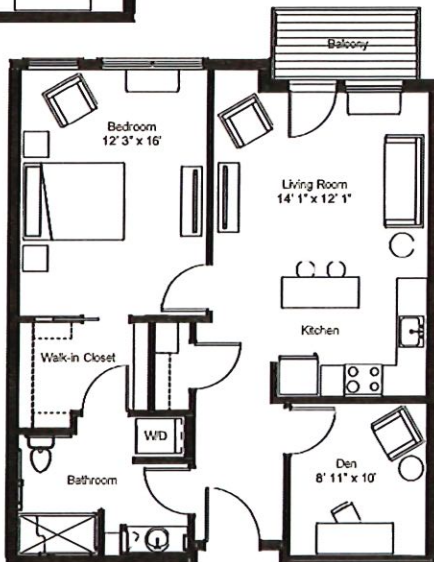
878 sq. ft., K  
\$3,183  
Apt. 220, 221, 320, 321



854 sq. ft., L  
\$3,127  
Apt. 105

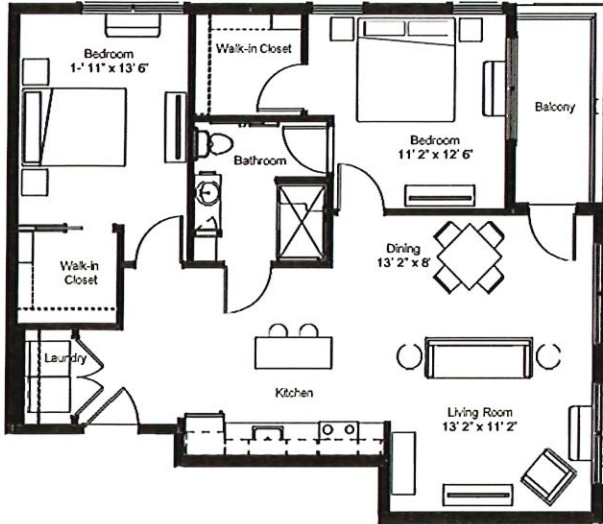


874 sq. ft., M  
\$3,143  
Apt. 214, 314

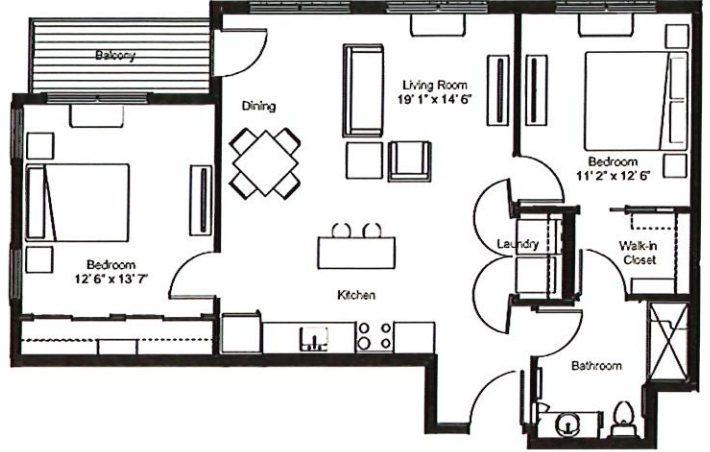


878 sq. ft., L2  
\$3,183  
Apt. 205, 305

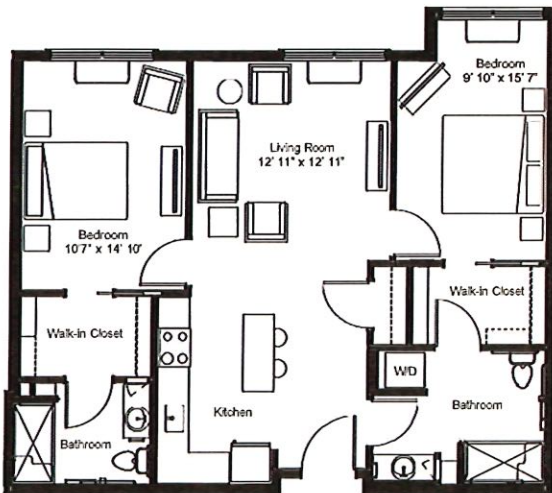
## Pheasant · Two-Bedroom Apartments



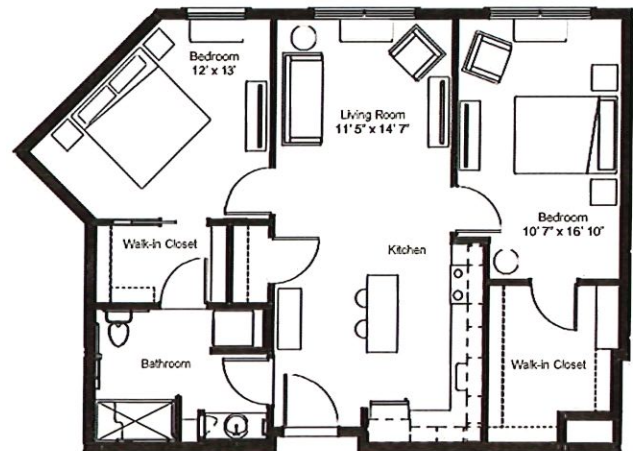
1090 sq. ft., V  
 \$3,573  
**Apt. 127**



1048 sq. ft., W  
 \$3,417  
**Apt. 229, 329**

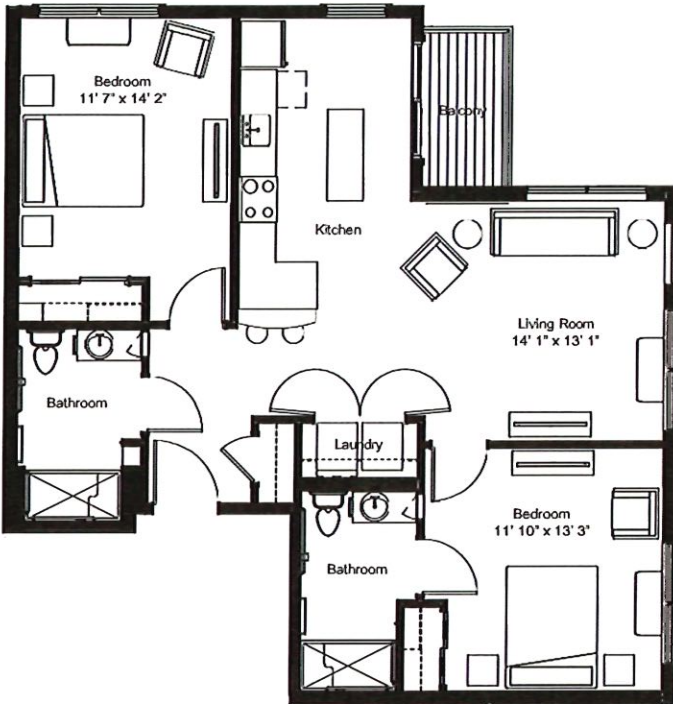


1016 sq. ft., X  
 (2 bath)  
 \$3,255  
**Apt. 213, 313**



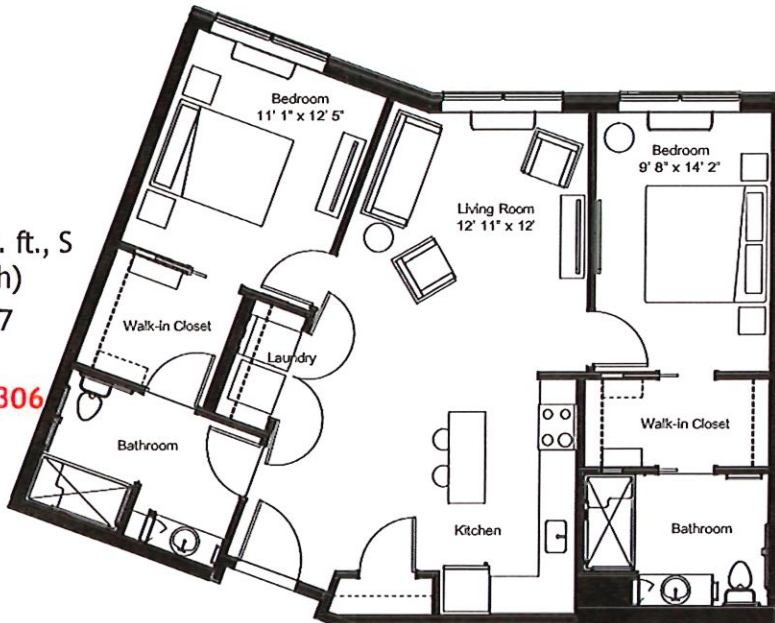
989 sq. ft., Y  
 \$3,272  
**Apt. 211, 311**

# Quail · Two-Bedroom Apartments



1093 sq. ft., R  
(2 bath)  
\$3,573

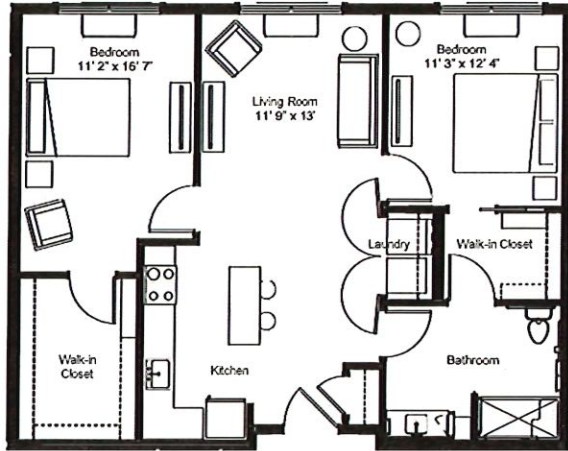
**Apt. 100, 200, 300**



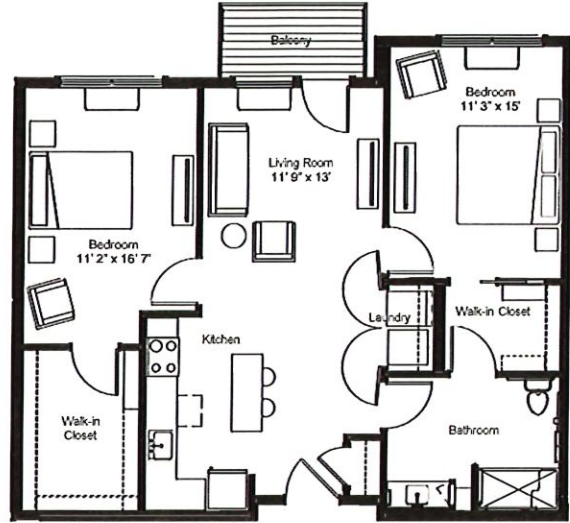
1083 sq. ft., S  
(2 bath)  
\$3,517

**Apt. 106, 206, 306**

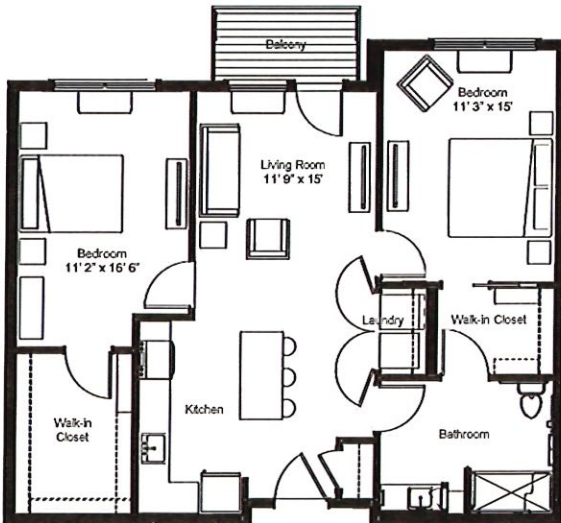
# Sandhill · Two-Bedroom Apartments



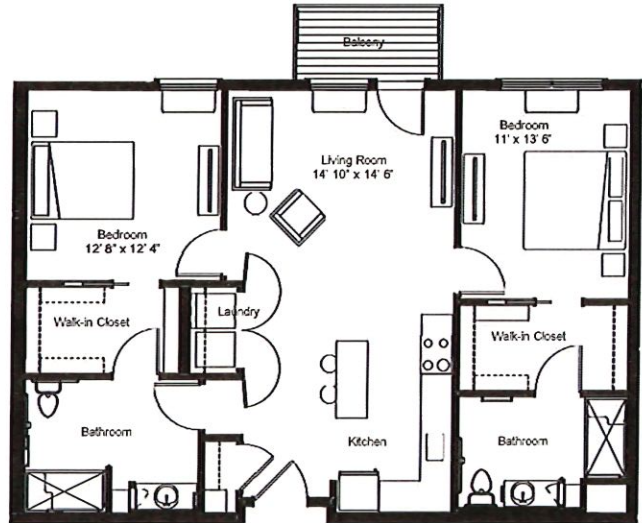
1009 sq. ft., T  
 \$3,255  
**Apt. 125**



1043 sq. ft., T2  
 \$3,417  
**Apt. 325**



1043 sq. ft., T2  
*ADA accessible*  
 \$3,417  
**Apt. 225**



1132 sq. ft., U  
 (2 bath)  
 \$3,702  
**Apt. 323**